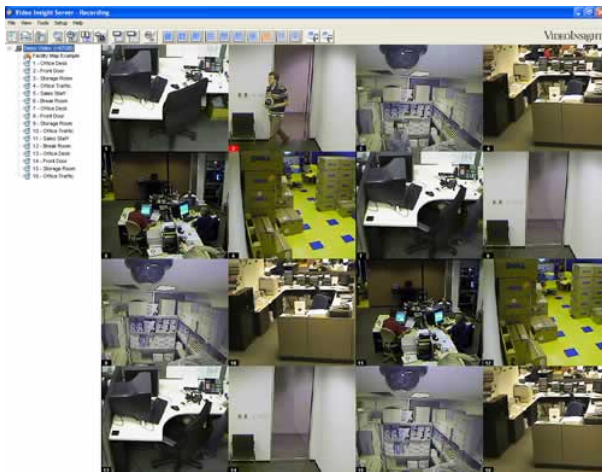


Video Server

The Video Insight Server is the cornerstone of the product and is used to convert the cameras signals into digital files. A single server allows you to connect up to 32 cameras and can be linked to other servers to support hundreds of cameras. The server typically will store the video on its local hard drive but can also be configured to support network storage or other Windows based storage systems. The user interface is easy to use and has a standard Windows interface. You can view up to 32 video streams in multiple display configurations. As part of our powerful infrastructure, Video Insight stores all its settings and log entries inside Microsoft SQL database tables. This gives us a very solid platform to deliver advanced features.

Video Insight has two primary functions: it records the video and provides tools to view live or recorded video. The system is designed to be easy to use while having very powerful features.

When you start Video Insight, the following screen appears:



There are three main sections of the screen:

- Viewing Panel which can be customized to view up to 32 cameras
- Left Navigation tree structure which can be used to navigate from camera to camera and to view recorded files.
- Tool Bar which provides convenient access to commonly used tools

Viewing Panel

The viewing panel can be configured to show from one to 32 cameras in various configurations. The layout buttons at the top of the viewing panel allow you to control the number of cameras displayed.



You can also create any number of custom views and select the layout to display on startup.

Left Navigation Tree Structure



Use the tree to navigate between individual cameras. Click on a single image on the screen to change the focus to a single camera.

Multi-Layered Facility Map



To help locate cameras across your organization, you can import images of your facilities into Video Insight. These maps can be accessed from the Server, Network Client or Web with camera labels turning red to indicate motion. You can position the Facilities Map on the screen to allow you to navigate between the maps and cameras. Our easy to use setup, allows you to take advantage of this feature without any customization.

Recorded Video



Using the left navigation tree, click on a camera. Recorded files are organized into folders starting with Today.

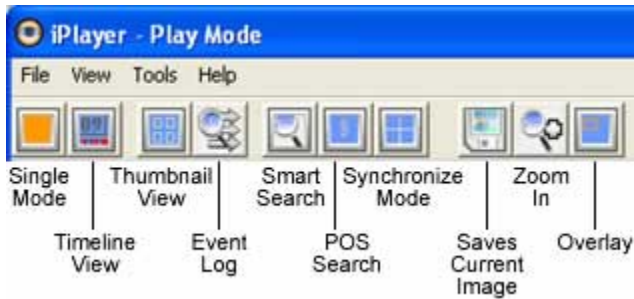


When you click on a recording, a playback screen will appear with the playback options.



Use the tool bar to access frequently used actions.

iPlayer



The iPlayer is very powerful tool for viewing recorded video. You can access iPlayer from the tool bar or by using the F12 key. The following functions can be performed using the iPlayer:

- Select camera, date, time and play the file
- Select multiple cameras to be played back simultaneously
- Select recordings to be played using the timeline chart
- Select recordings to be playing using thumbnails
- Select recordings to be played using the Event Log
- Smart Search
- POS transaction search
- Overlay and zoom



IP Server

The Video Insight IP Server allows you to view live and recorded video from IP cameras on the server, Network Client or Web Client. The Video Insight IP Server is based on the same leading Microsoft.Net and SQL technologies as our other products and is designed to support hundreds of cameras from leading camera manufactures including Axis, Canon, D-Link, JVC, Panasonic, Mobotix, Pixord, Sony, Toshiba, and Vivotek. The IP Server will run as a standalone product or in combination with the Video Insight Server giving you a flexible hybrid video surveillance system made up of analog and IP security cameras.

Key Features

- Currently supporting over 70 different camera models from leading manufactures
- Records up to 30fps from each IP Camera
- Recorded video is stored as a standard AVI file and requires no export
- Software based Motion Detection
- Support fro Pre and Post Motion Buffers
- High performance engine will support up to 64 Cameras per server capturing a total of 600fps motion activated recording
- User defined layouts to view multiple cameras side by side
- Integrated PTZ controls
- View multiple cameras using the Network Client and Web Client
- Scheduled, continuous, motion-activated, or event-based recording
- Timeline graph
- Based on leading Microsoft.Net and SQL Server technologies
- Easy-to-use standard Windows interface
- World-class customer support

IP Only

The IP Server can also run as a stand-alone product supporting cameras from multiple manufactures including Axis, Canon, D-Link, JVC, Panasonic, Mobotix, Pixord, Sony, Toshiba, and Vivotek. Users are able to view live and recorded video from the IP Server, Network Client and Web Client.





Benefits

There are many benefits to using our video surveillance software. Yes, we have the surveillance features that you expect in a video security system. But, by using off the shelf PC's as our platform we bring you a lower total cost of ownership.

Our Software:

- Takes advantage of the trends of ever increasing power of PCs and decreasing prices
- Requires little or no training because of the easy to use Windows interface navigation tree
- Can be maintained by existing IT support personnel because it's built on a standard Windows platform.
- Leverages existing infrastructure: networks, analog cameras, storage, web server
- Reduces video security implementation costs due to easy integration with existing POS, Access control and other internal systems
- Reduces cost of on-going support by providing one click software upgrades and remote management of servers
- Easily expands for additional memory and storage
- Is supported by US based technical support personnel who are experts in video surveillance.

Additional Benefits

- Instant access to high quality video recordings anywhere on the network or over the internet with a standard web browser.
- Intuitive and easy to use interface makes viewing digital video recordings simple to learn without additional training.
- Alarm or motion events trigger actions such as increasing frame rates, email alerts, and PTZ movements
- Superior performance and video surveillance features at the lowest cost
- No hassle with tapes, multiplexers, or VCR's



- Easily create video clips to assist in crime prosecution
- Scalable: unlimited video surveillance servers and security cameras
- Stable, proven technology
- Full loss prevention capabilities including POS overlay and transaction search
- Eases migration from analog security cameras to IP security cameras - standard surveillance system supports both traditional analog surveillance cameras and IP surveillance cameras
- World class US based support means quick, knowledgeable answers to your video surveillance questions in plain english